

# ABC

VENTILATION SYSTEMS



**FLEXIBLE PERFORMANCE DUCTING**

**WORLD LEADER IN MINE & TUNNEL VENTILATION**





**MINEVENT<sup>®</sup>**

**MINEDUCT<sup>™</sup>**

**TWINDUCT<sup>™</sup>**

## MAIN FEATURES

- FlexLine<sup>™</sup> Performance Ducting is available in standard diameters from 12" - 120" (300mm - 3050mm) depending on the product type.
- Standard section lengths range from 25' - 1000' (7.5M - 300M) depending on the product type.
- MSHA and CSA Flame Resistant FlexLine<sup>™</sup> is available in a number of high visibility colours.
- Flame Resistant and Anti-Static (FRAS) FlexLine<sup>™</sup> is available in our standard Yellow colour. FlexLine<sup>™</sup> meets a variety of international FRAS standards including Canada, South Africa and Australia.
- FlexLine<sup>™</sup> is offered with a wide variety of coupling options including Zipper, Velcro, QuickSnap as well as conventional ring to ring connections. Refer to pages 7 - 8 for additional details on ABC's range of FlexLine<sup>™</sup> couplings.

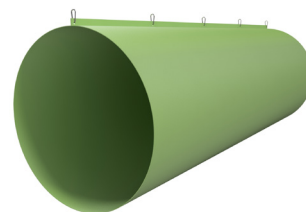


Photo Credit Manroc Developments Inc.

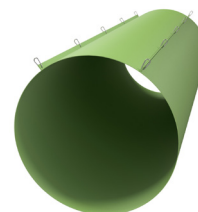


# MINEVENT®

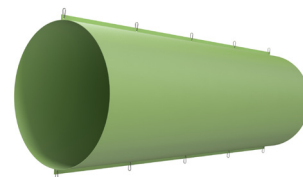
High pressure ventilation for positive pressure airflow. Standard diameters from 12" - 120" (300 - 3050mm) and standard section lengths from 25' - 1000' (7.5 - 300metres).



**SINGLE SUSPENSION**



**DUAL SUSPENSION**



**DUAL 180° SUSPENSION**

## MineVent® Maximum Recommended Positive Pressure

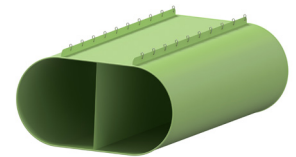
Diameter		T45 Fabric		870 Fabric	
in	mm	in wg	Pascals	in wg	Pascals
24	609.5	67	16,688	60	14,945
30	762.0	50	12,454	45	11,208
36	914.4	44	10,959	40	9,963
42	1,066.8	36	8,967	33	8,219
48	1,219.2	34	8,468	30	7,472
54	1,371.6	29	7,223	26	6,476
60	1,524.0	27	6,725	24	5,978
72	1,828.8	22	5,479	20	4,981
80	2,032.0	20	4,981	18	4,483
87	2,209.8	18	4,483	16	3,985
95	2,413.0	17	4,234	15	3,736
102	2,598.0	15	3,736	14	3,487
110	2,794.0	14	3,487	13	3,238
120	3,048.0	13	3,238	12	2,989



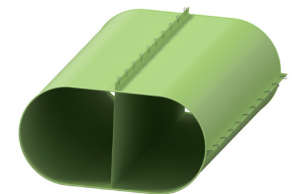


# TWINDUCT™

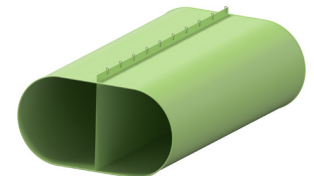
Oval chambered ducting for positive pressure ventilation designed to maximize headroom in drift or tunnel by 25%. Standard diameters from 18" - 72" (450 - 1830mm) and standard section lengths from 25' - 100' (7.5 - 30.5 metres).



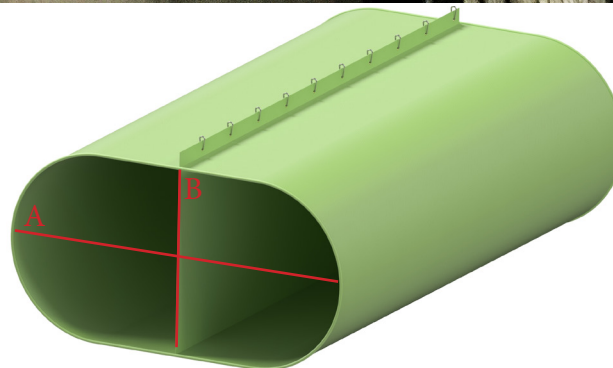
**T1 SUSPENSION**



**T2 SUSPENSION**



**T3 SUSPENSION**



**TwinDuct™ Dimensions**

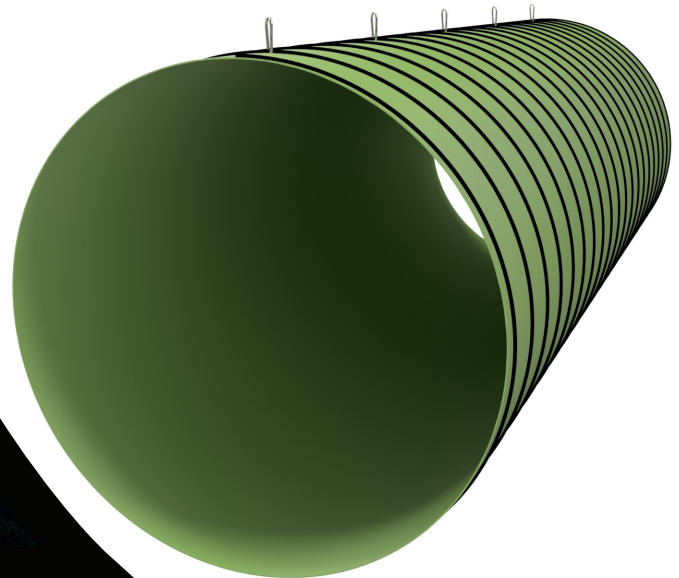
Nominal Diameter		Total Area	Max Positive Static	TwinDuct™ Dimensions	
in	mm	ft	in wg	A (in)	B (in)
24	610	4.27	10	33.25	18.00
30	762	7.07	10	43.25	22.50
32	813	7.87	10	45.00	24.00
36	915	9.85	10	51.25	27.00
42	1,067	13.63	9	60.00	31.50
48	1,220	16.49	8	66.50	36.00
54	1,372	21.98	7	76.50	40.50
60	1,524	26.71	6	85.25	45.00





# MINEDUCT™

Round and Oval spiral wire reinforced ventilation ducting for positive and negative pressure airflow. Standard diameter from 12" - 72" (300 - 1830mm) and section lengths from 15' - 25' (5 - 7.5 metres).



**MineDuct™ Negative Pressure Chart**

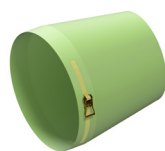
Dimensions		Pitch 3" (7.62cm)		Pitch 4" (10.16cm)		Pitch 6" (15.24cm)	
in	mm	in wg	Pa	in wg	Pa	in wg	Pa
24	610	14	3,487	11	4,234	8	2,740
30	762	11	2,740	9	2,241	5	1,254
36	915	7	1,743	5	1,245	3	747
42	1,067	4	996	3	747	2	498
48	1,220	3	747	2	498	1	249





# FlexLine™ Accessories

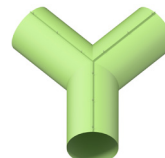
FlexLine™ Accessories are designed for optimum efficiency, durability and low leakage in a full range of standard diameters from 16" - 100" (405mm - 2540mm). Designed for compatibility with MineVent®, TwinDuct™ and MineDuct™, all Accessories are offered in a full range of coupling options including Zipper, QuickSnap, Grommet and conventional ring to ring connections.



**FAN ADAPTER**



**LATERAL**



**WYE**



**TEE**



**90° ELBOW**



**45° ELBOW**



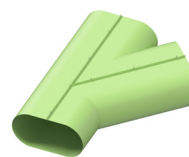
**65° ELBOW**



**DISCHARGE  
ADAPTOR**



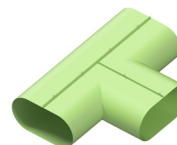
**TwinDuct™ FAN  
ADAPTER**



**TwinDuct™  
LATERAL**



**TwinDuct™  
WYE**



**TwinDuct™  
TEE**



**OVAL - ROUND  
TRANSITION**



**REDUCER**



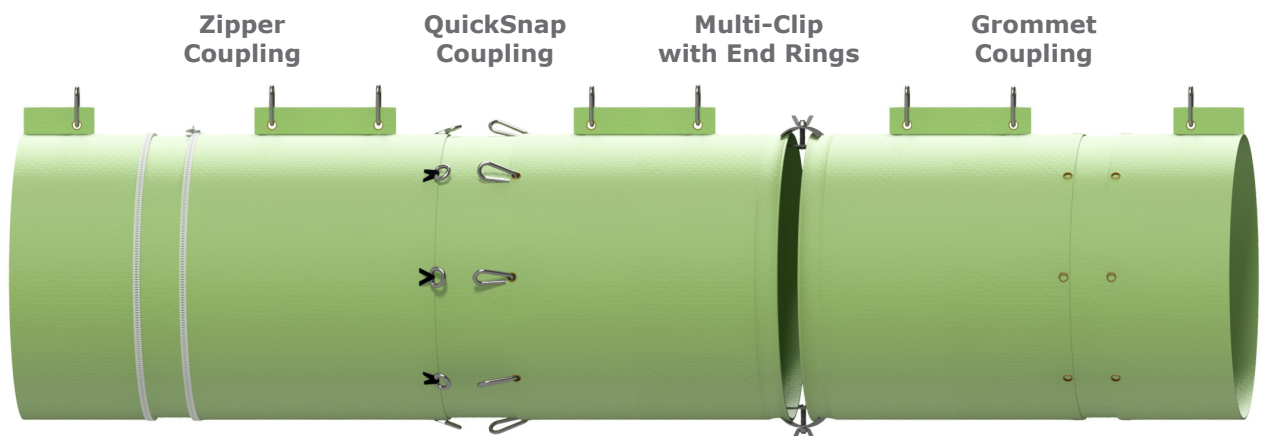
**BLASTBAG**





## COUPLING CONFIGURATIONS

FlexLine™ offers the most comprehensive line of coupling options for MineVent®, TwinDuct™, MineDuct™ and their Accessories. High efficiency, leak-proof couplings have been precisely engineered to reduce installation time and minimize air leakage at the joint. ABC has soft coupling options for the ultimate in low resistance and leakage, as well as alternate options using end rings on inlet and outlet ends of the ducting.



Attributes	Zipper Coupling	QuickSnap Coupling	Multi-Clip with End Rings	Grommet Coupling
Leakage Efficiencies	1	2	3	4
Installation Time	1	2	4	3
Cost	3	3	1	1

(Based on a 1-4 rating, with 1 being best)

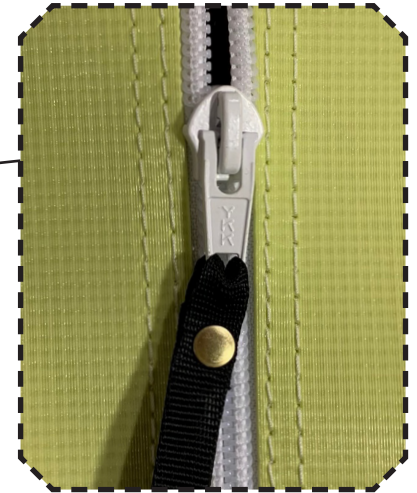
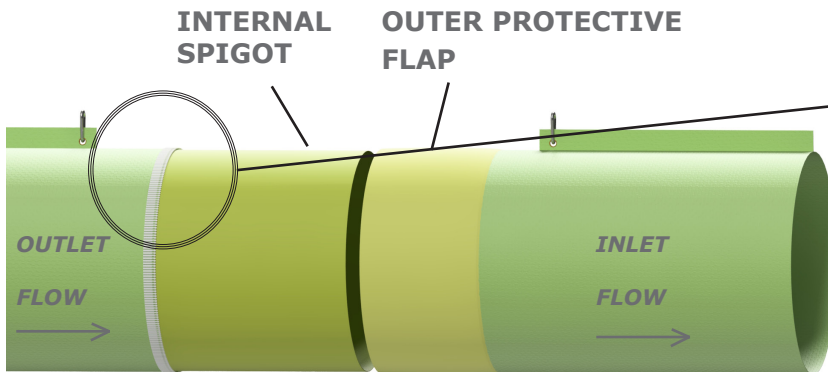




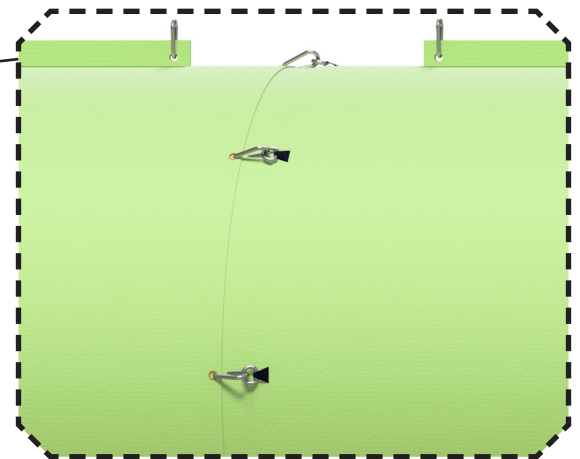
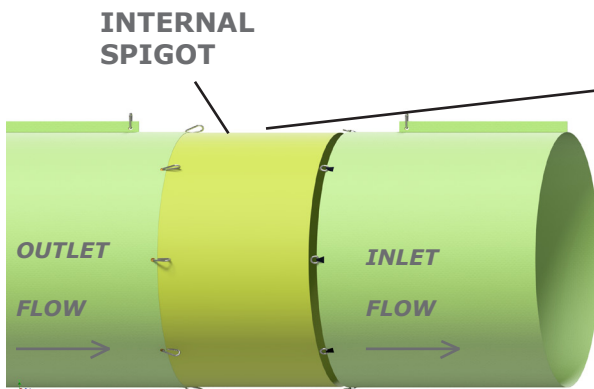
**FlexLine™**  
Performance



## Zipper Coupling



## QuickSnap Coupling



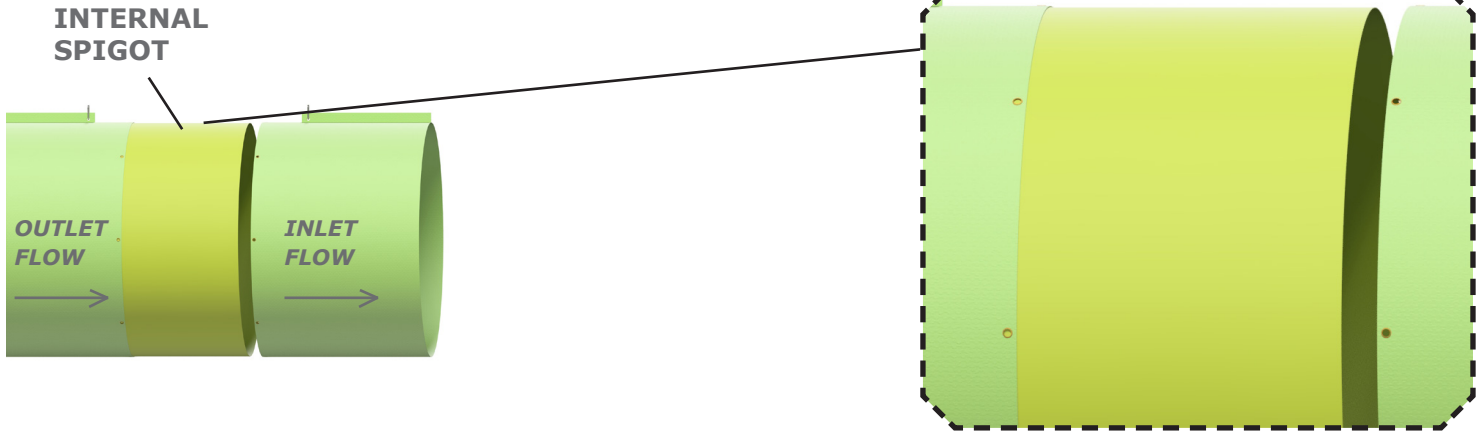




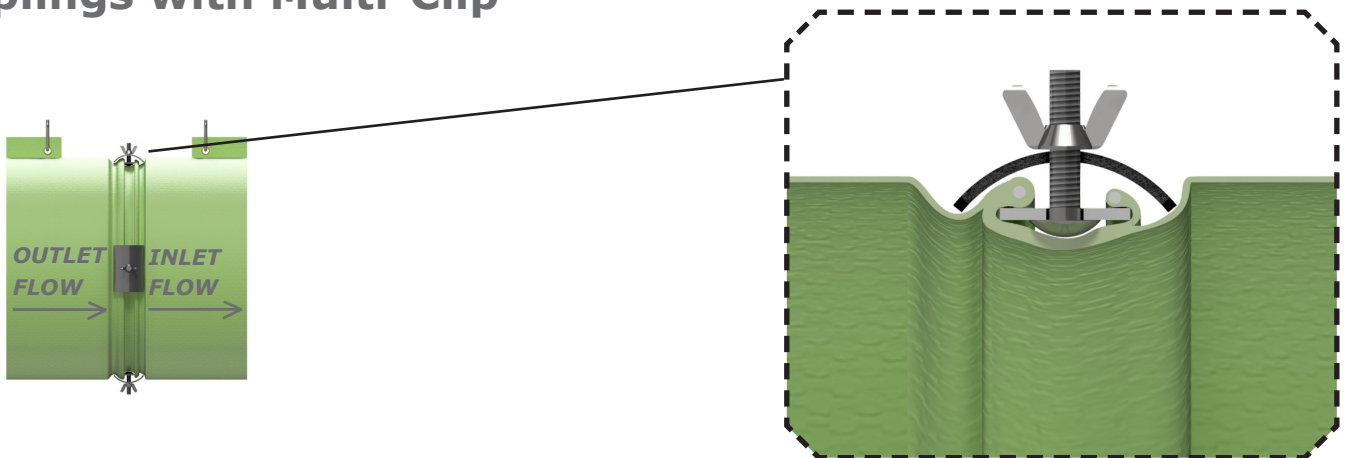
**FlexLine™**  
Performance



## Grommet Coupling



## Interlocked Wire Rope Couplings with Multi-Clip





## RELIABILITY

### MANUFACTURING

The FlexLine™ Advantage starts with quality base materials and consistent manufacturing practices. ABC ensures superior quality, performance and reliability by only using the best, most environmentally responsible raw materials.

FlexLine™ Ducting is manufactured with precision and assembled using fusion-welding technology for high-strength. Our process ensures sizes remain accurate and reliable from specification to installation. ABC annually audits and certifies its processes using the ISO 9001 program.

## SAFETY

### FIRE RESISTANT

FlexLine™ Performance Ducting is fire resistant (FR), self-extinguishing and passes CAN/CSA M427-M91 and MSHA CFR30 standards, as well as other local FR regulations. Please contact our offices for certifications.

### ORGANIC COLOUR PIGMENTS

All of ABC's fabrics use organic coloring pigments to provide high-visibility and air-quality safety.

### GREENSCREEN HAZARD ASSESSMENT

High-quality PVC is benchmarked by the plasticizers and chemicals used in the formulation. FlexLine™ Performance Ducting fabrics adhere to the highest processing standard, evaluated using the Greenscreen Hazard Assessment scoring system. Our Benchmark 4 score uses the safest ingredients and chemicals available.

### PHTHALATE FREE

ABC's purpose-built fabrics are manufactured using phthalate-free PVC. ABC FlexLine products are the safest for both human and environmental interface.



Photo Credit Manroc Developments Inc.





# The FlexLine™

## Ducting Advantage



**QUALITY**



**SAFETY**



**FREIGHT  
SAVINGS**



**ENVIRONMENTAL**



**PERFORMANCE**



**COST SAVINGS**



**FLAME  
RESISTANCE**



**ANTI - STATIC**

### **ABC VENTILATION SYSTEMS**

1802 QUEBEC AVENUE  
SASKATOON, SK. S7K 1W2  
CANADA

TEL: +1.306.653.4303  
EMAIL: [SALES@ABCVENTILATION.COM](mailto:SALES@ABCVENTILATION.COM)

**[WWW.ABCVENTILATION.COM](http://WWW.ABCVENTILATION.COM)**